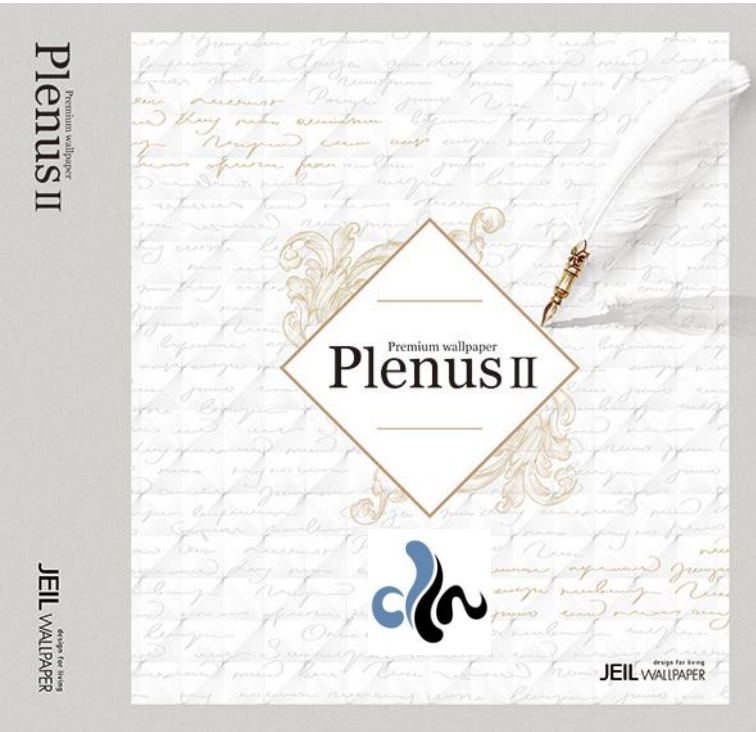
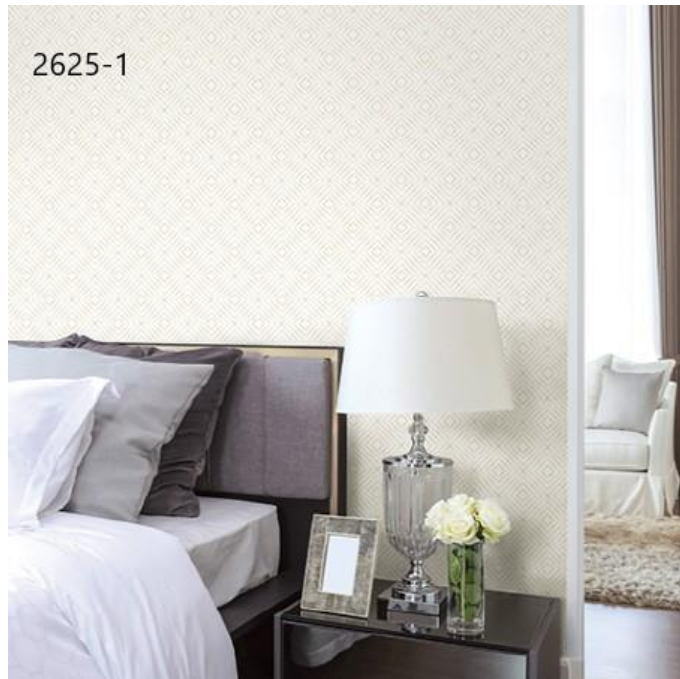


**UPDATED
WITH QTY
1-APRIL-2024**





2623-2



2622-4





2618-2



2618-1



2617-4



2616-1



2615-4



2615-1





2544-4



2544-3



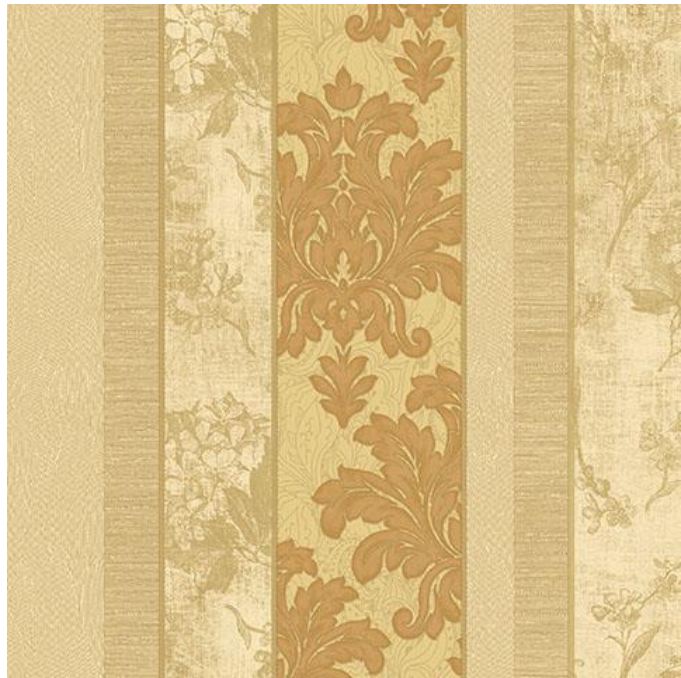
2544-1





PATTERN : 2544-1

QTY : 08



PATTERN : 2544-3

QTY : 15+



PATTERN : 2544-4

QTY : 07



PATTERN : 2547-2

QTY : 01



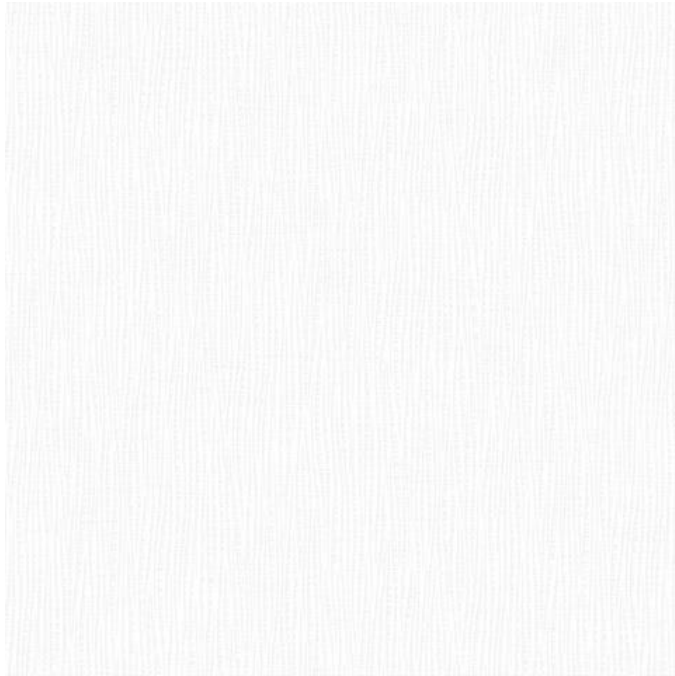
PATTERN : 2547-3

QTY : 15+



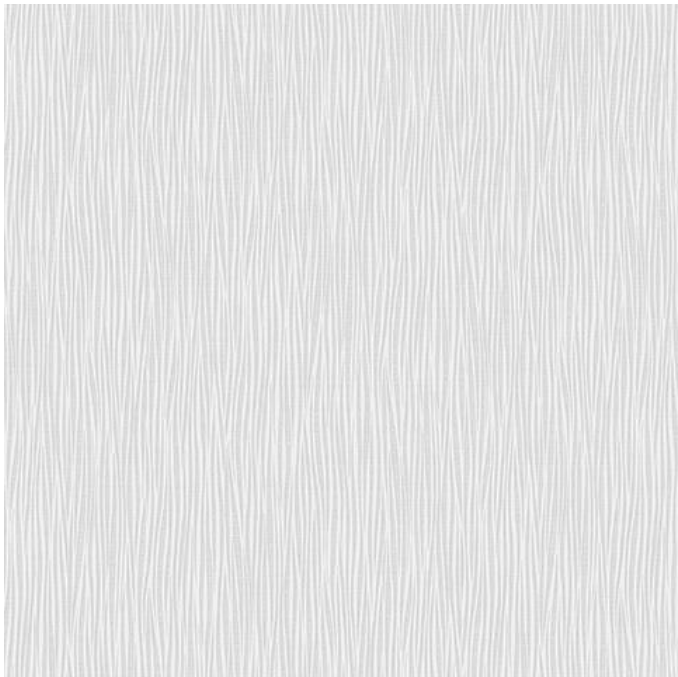
PATTERN : 2547-5

QTY : 07



PATTERN : 2601-1

QTY : 15



PATTERN : 2601-3

QTY : 06



PATTERN : 2602-1

QTY : 15+



PATTERN : 2602-3

QTY : 03



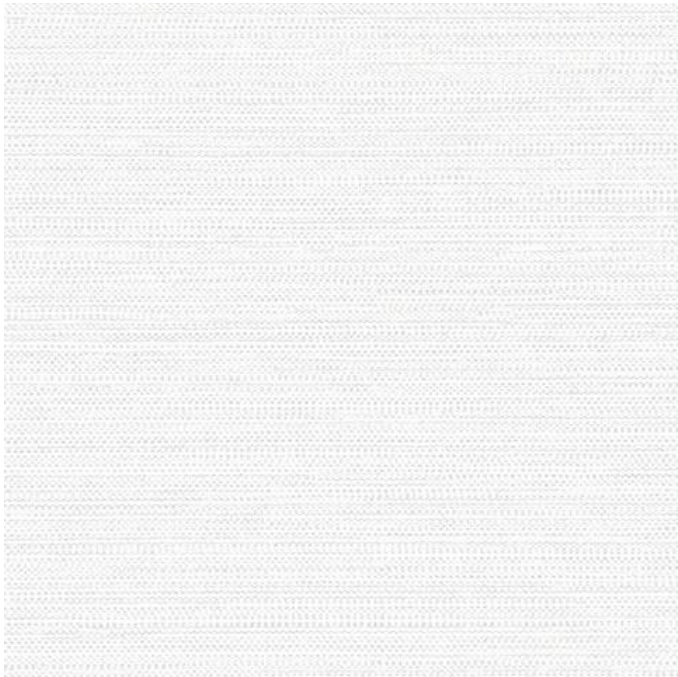
PATTERN : 2603-1

QTY : 01



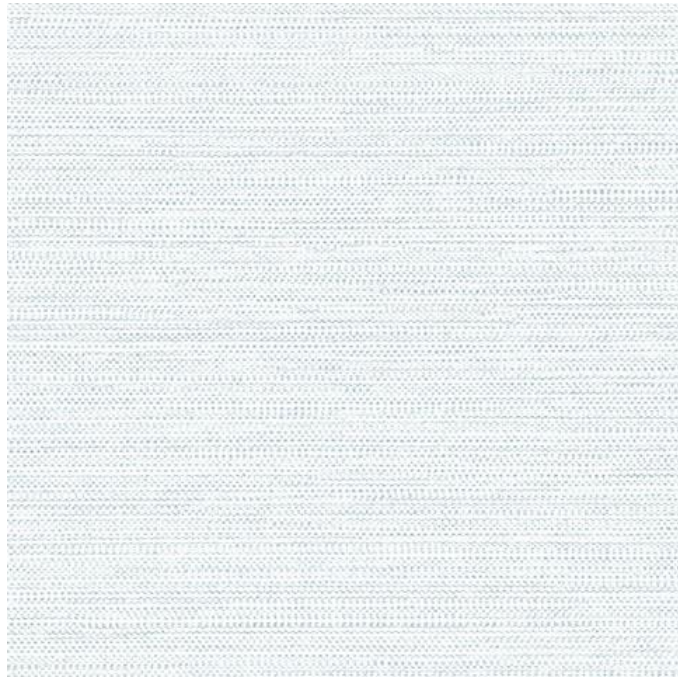
PATTERN : 2604-2

QTY : 02



PATTERN : 2606-1

QTY : 15+



PATTERN : 2606-2

QTY : 15+



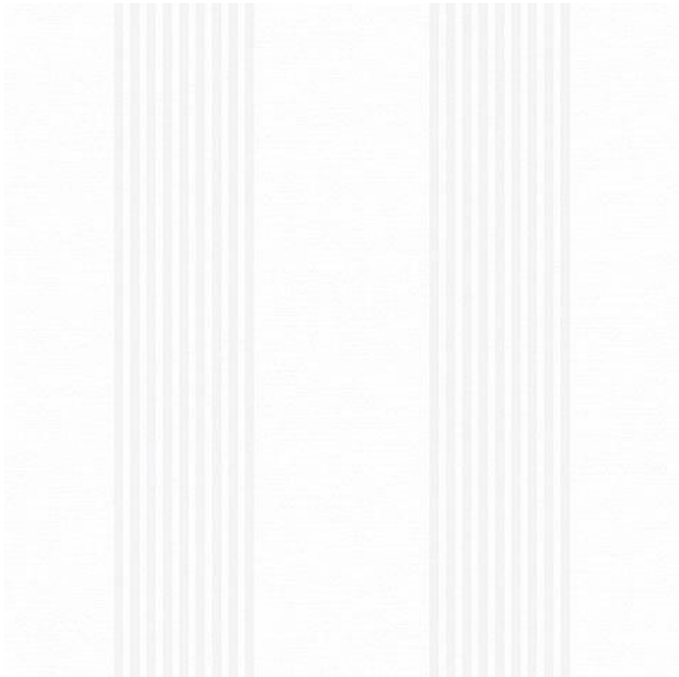
PATTERN : 2607-1

QTY : 15+



PATTERN : 2607-2

QTY : 01



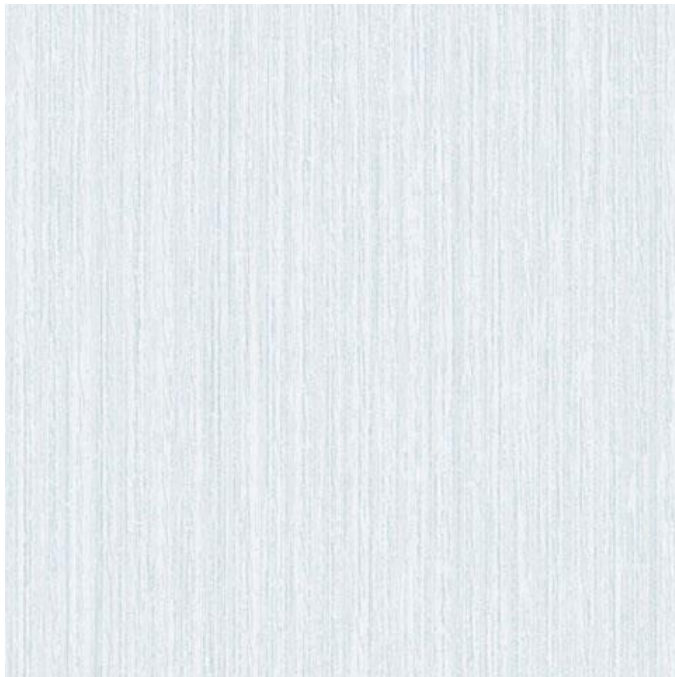
PATTERN : 2608-1

QTY : 15+



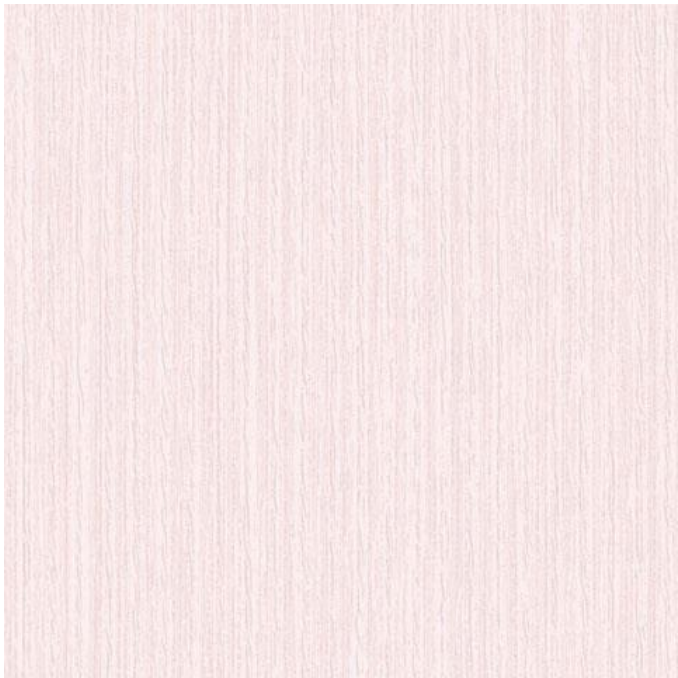
PATTERN : 2608-2

QTY : 03



PATTERN : 2610-1

QTY : 10



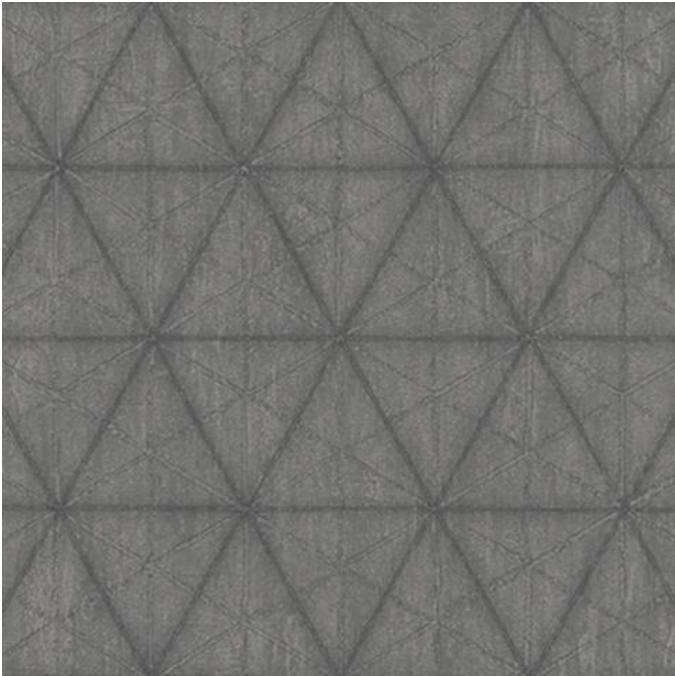
PATTERN : 2610-2

QTY : 08



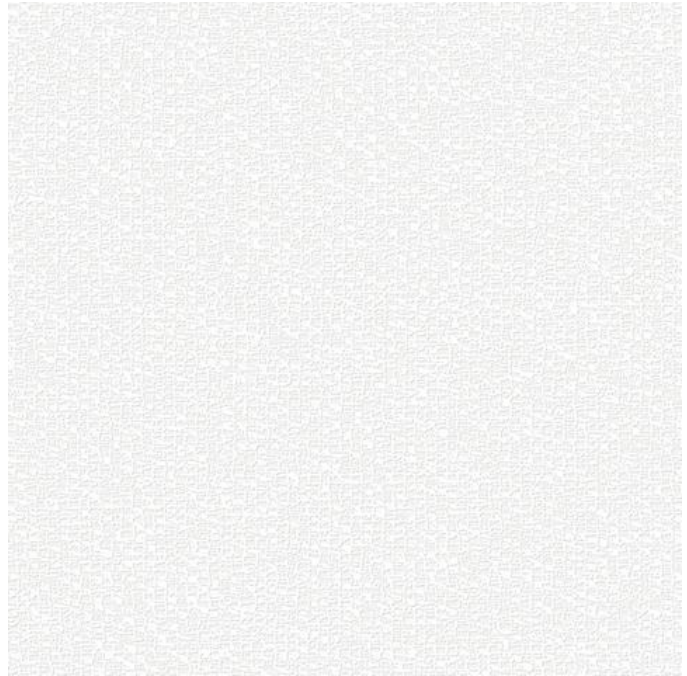
PATTERN : 2611-2

QTY : 02



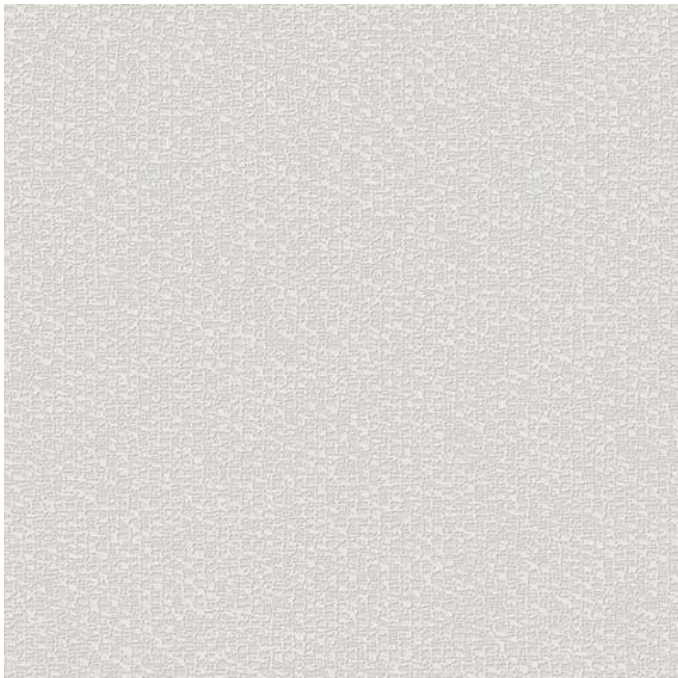
PATTERN : 2613-2

QTY : 01



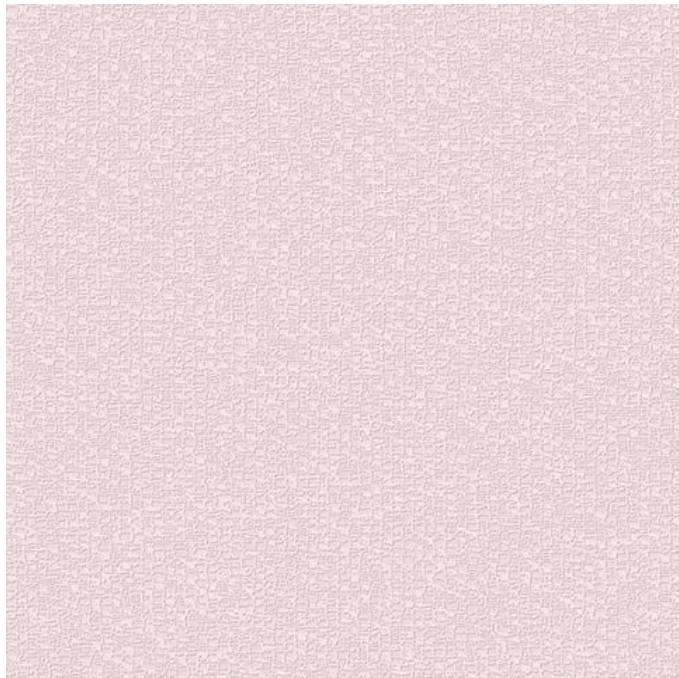
PATTERN : 2614-1

QTY : 10



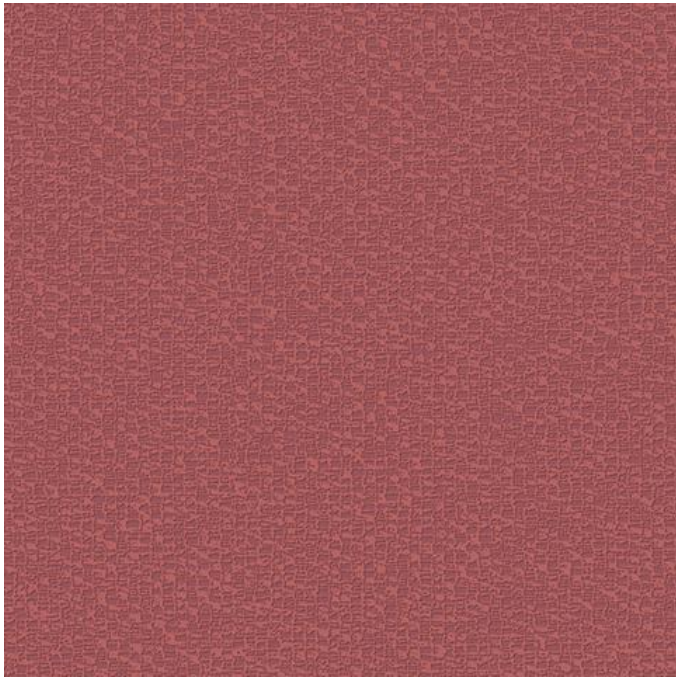
PATTERN : 2614-2

QTY : 14



PATTERN : 2614-3

QTY : 10



PATTERN : 2614-4

QTY : 15+

INGPLANT; OFTHE/GENUSROSA, INTHE/FAMILYROSACEAE, ORINSEVERALBEA
ANDTHOUSANDSOFCULTIVARS, THEYFORMA/GROUPOFPLANTS THATCANBEER
THESTEMSTHAT; AREOFTENDARMEDWITHSHARPPRICKLES. FLOWERSVARYINSI
SHOWY, IN/COLOURSRANGING; FROMWHITETHROUGH/YELLOWSTODREDS. MOS
LLEP; NUMBERSNATIVE; TOEUROPE, NORTH; AMERICA, AND; NORTHWESTERN/AF
BEAL; WIDELYGROWNFOR/THEIRBEAUTYAND/OFTENARE; FRAGRANT. ROSES
INMANYSOCETIES, ROSEPLANTS/RANGE; IN/SIZESFROMCOMPACTMINATUREROS
LETERSINHEIGHT, DIFFERENT/SPECIESHYBRIDIZE; EASILY ANDTHEY/SUBGENE
RANGE OFGARDENROSES, AROSE; ISAWOODYPERENNIALFLOWERING; PLANTOF
LE, OR/THEFLOWERITBEARS, THERE; AREOVERAHUNDREDSPECIESANDTHOUS
EPLANTSTHATCANBEERECTSHRUBS, CLIMBINGOR/TRAILINGWITHSTEMS THAT
ES, FLOWERS; VARYINSIZEANDSHAPEANDARE; USUALLYLARGEAND/SHOWY, I
UGH; YELLOWSTODREDS, MOSTSPECIESARENATIVE; TOASIA, WITHSMALLERUM
CAANDNORTHWESTERNAFRICA, SPECIES, CULTIVARSAND; HYBRIDSAREWID
EN; AREFRAGRANT, ROSES, HAVEACQUIREDCULTURAL; SIGNIFICANCEINMANYSO
COMPACTMINATUREROSES, TOCLIMBERS; THATCANREACHSEVENMETERS, SINHEI
SILY, AND; THISHAS; BEENUSEDPINTHEDEVELOPMENT; OFTHEWIDERANGE/OF
IALFLOWERING; PLANTOFTHEGENUSROSA, INTHE/FAMILYROSACEAE, ORTHELO
EDSPECIESOAND; THOUSANDSOFCULTIVARS, THEY/FORMAGROUPOFPLANTS
TRAILINGWITH/STEMSTHAT; AREOFTENDARMEDWITHSHARPPRICKLES, FLOWE
Y; LARGEAND; SHOWY, INCOLOURSRANGING; FROMWHITETHROUGHYELLOWSA
AST, WITHSMALLER; NUMBERSNATIVE; TOEUROPE, NORTH; AMERICA, ANDNORTI
DIHYBRIDSAREAL; WIDELYGROWNFOR/THEIRBEAUTYAND/OFTENARE; FRAGR
NIFICANCEINMANYSOCETIES, ROSE; PLANTS RANGEIN; SIZESFROMCOMPACT, MI
REACH; SEVENMETERS; INHEIGHT, DIFFERENT; SPECIESHYBRIDIZEEASILY ANDT
E; OFTHEWIDERANGE OFGARDENROSES, AROSEISAWOODYPERENNIALFLOWER
MILY; ROSACEAE, ORTHEFLOWERITBEARS, THEREAREOVERAHUNDRED, SPECIE
R MAGROUP; OFPLANTS THAT; CANBEERECTSHRUBS, CLIMBINGOR; TRAILINGWIT
SHARPPRICKLES, FLOWERS; VARYINSIZEANDSHAPEAND/RE; USUALLYLARGEAN
HITETHROUGHYELLOWSTODREDS, MOSTSPECIESARENATIVE; TOASIA, WITHSM
H; AMERICA, ANDNORTHWESTERNAFRICA, SPECIES, CULTIVARSAND; HYBRIDSARE
ANDOFTEN; AREFRAGRANT, ROSES, HAVEACQUIRED/ CULTURALSIGNIFICANCE IN

PATTERN : 2615-1

QTY : 15+



PATTERN : 2615-2

QTY : 15+



PATTERN : 2615-3

QTY : 15+

NGPLANT OF THE / GENUS ROSA, IN THE FAMILY ROSACEAE, OR THE FLOWERING PLANT
AND THOUSANDS OF CULTIVARS. THEY FORM A GROUP OF PLANTS THAT ARE OFTEN
THAT ARE OFTEN ARMED WITH SHARP PRICKLES. FLOWERS VARY IN SIZE
SHOW, IN COLOURS RANGING FROM WHITE THROUGH YELLOW AND REDS. MOST
LARGER NUMBERS NATIVE TO EUROPE, NORTH AMERICA, AND NORTHWESTERN
AFRICA. WIDELY GROWN FOR THEIR BEAUTY AND OFTEN ARE FRAGRANT. ROSES
IN MANY SIZES. ROSE PLANTS RANGE IN SIZE FROM COMPACT, MINIATURE ROSES
TO TREES AND VERY DIFFERENT SPECIES HYBRIDIZE EASILY, AND THIS HAS LEAD
TO THE WIDE RANGE OF ROSES. A ROSE IS A WOODY PERENNIAL FLOWERING PLANT
OF THE ORDER ROSALES. THE PLANTS BEAR THE BARK OF A WOODY SPECIES AND
HOUSING THE BARK IN BEER, SHRUBS, CLIMBING OR TRAILING WITH STEMMATA
ES FLOWERS VARY IN SIZE AND SHAPE AND ARE USUALLY LARGE AND SHOWY. IN
COLORS, YELLOW AND REDS. MOST SPECIES ARE NATIVE TO ASIA, WITH SMALLER
NUMBER NATIVE TO EUROPE, NORTH AMERICA, AND NORTHWESTERN AFRICA. SPECIES,
CULTIVARS AND HYBRIDS ARE ALL WIDELY GROWN. ROSES HAVE ACQUIRED
CULTURAL SIGNIFICANCE IN MANY SOCIETIES. COMPACT MINIATURE ROSES,
TO CLIMBERS THAT CAN REACH SEVERAL METERS IN HEIGHT, AND THUS HAS
BEEN USED IN THE DEVELOPMENT OF THE WIDE RANGE OF FLOWERING PLANTS
OF THE GENUS ROSA, IN THE FAMILY ROSACEAE, OR THE FLOWERING PLANTS
OF THE ORDER ROSALES. THEY FORM A GROUP OF PLANTS THAT ARE OFTEN
ARMED WITH SHARP PRICKLES. FLOWERS VARY IN SIZE AND SHAPE AND ARE
USUALLY LARGE AND SHOWY. IN COLORS, RANGING FROM WHITE THROUGH
YELLOW AND REDS. MOST SPECIES ARE NATIVE TO ASIA, WITH SMALLER
NUMBER NATIVE TO EUROPE, NORTH AMERICA, AND NORTHWESTERN AFRICA.
SPECIES, CULTIVARS AND HYBRIDS ARE ALL WIDELY GROWN. ROSES
HAVE ACQUIRED CULTURAL SIGNIFICANCE IN MANY SOCIETIES.

PATTERN : 2615-4

QTY : 15+



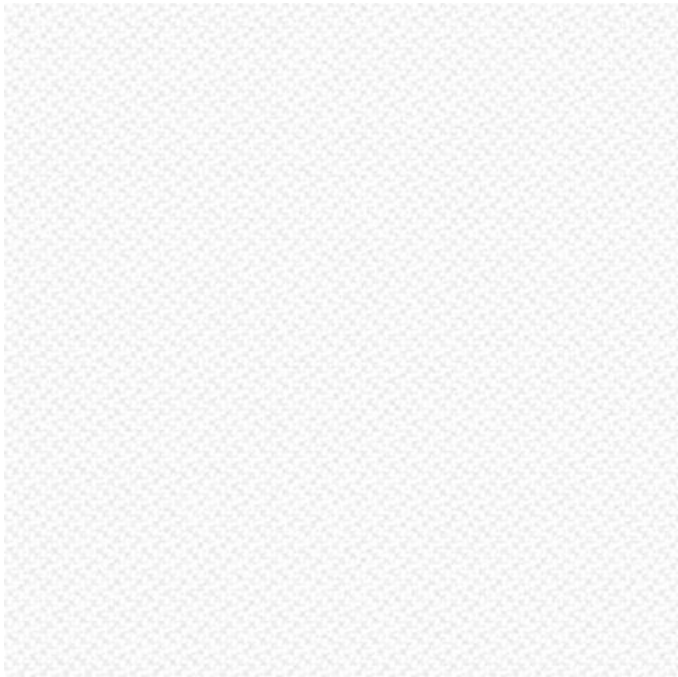
PATTERN : 2616-1

QTY : 15+



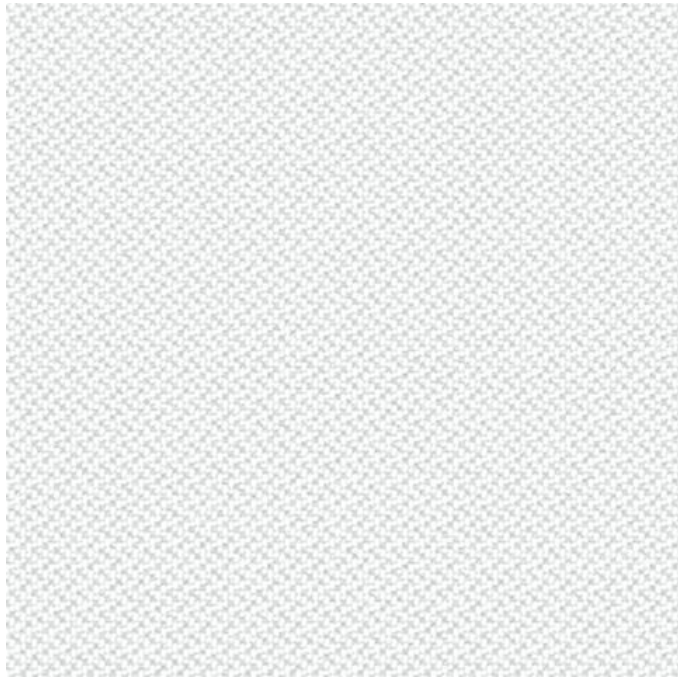
PATTERN : 2616-2

QTY : 02



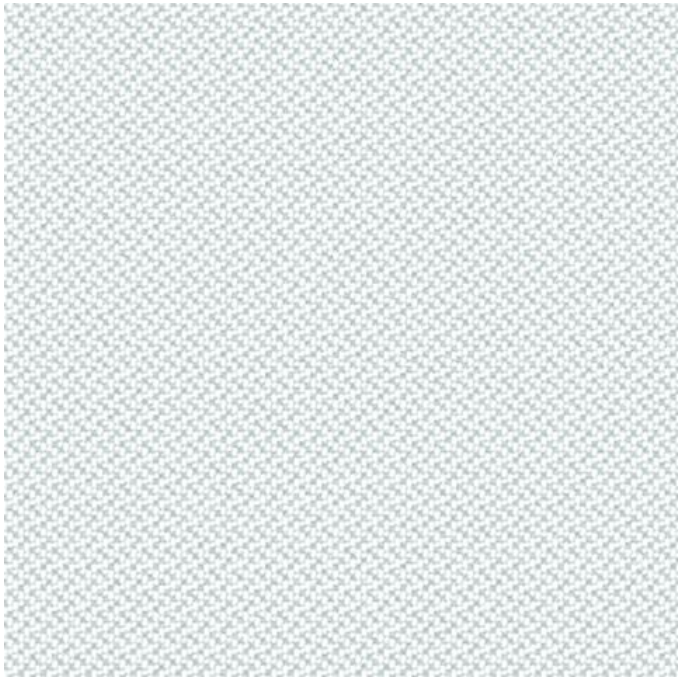
PATTERN : 2617-1

QTY : 03



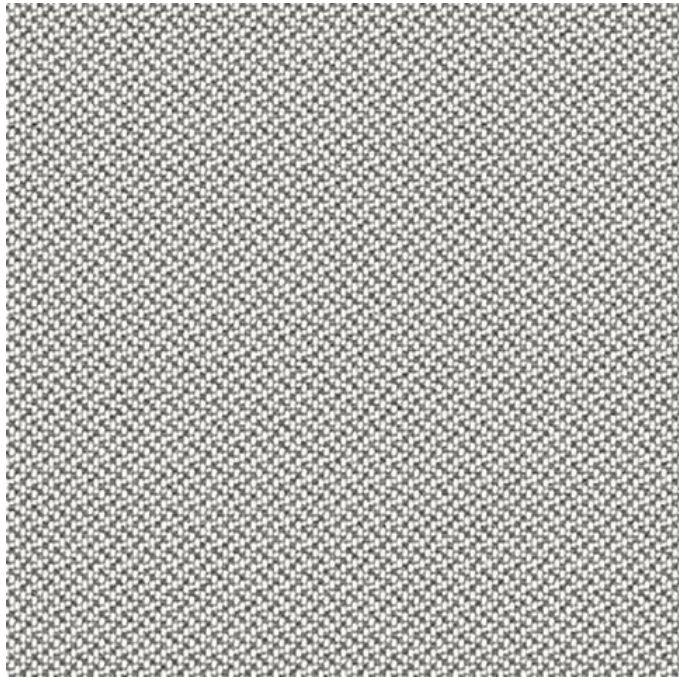
PATTERN : 2617-2

QTY : 15+



PATTERN : 2617-3

QTY : 15+



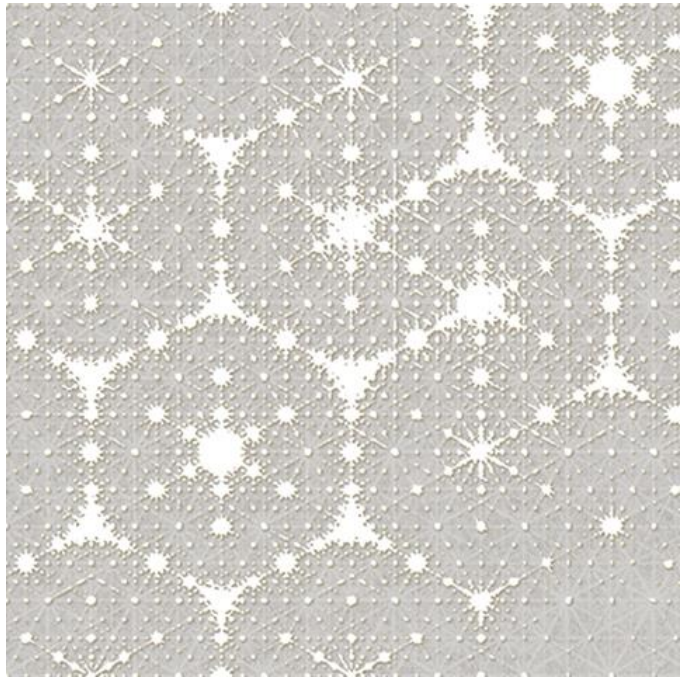
PATTERN : 2617-4

QTY : 14



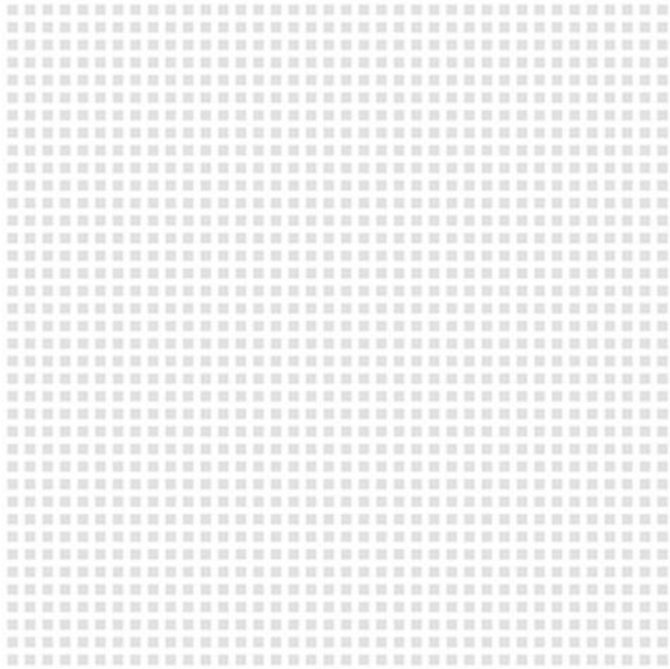
PATTERN : 2618-1

QTY : 15+



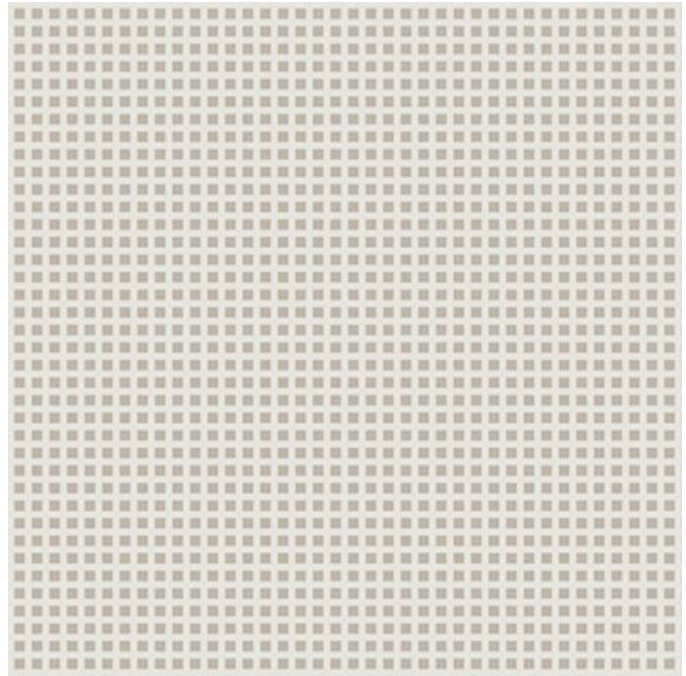
PATTERN : 2618-2

QTY : 13



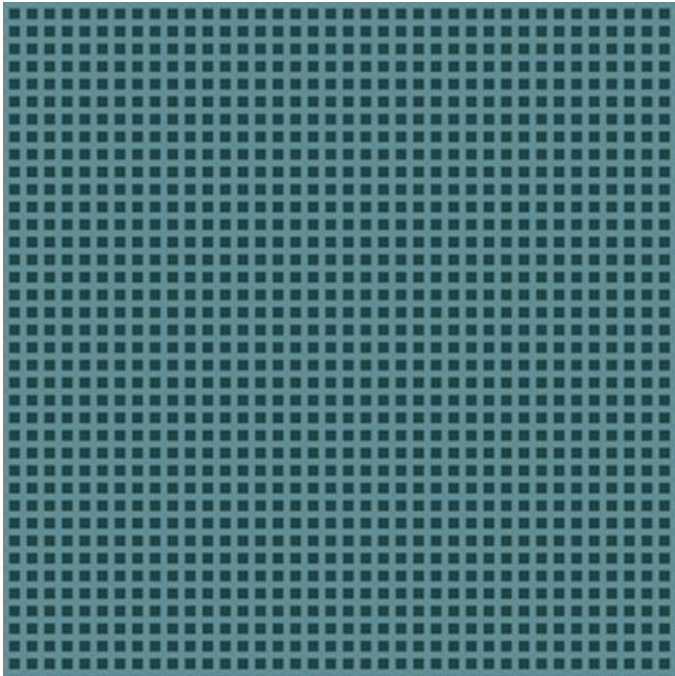
PATTERN : 2619-1

QTY : 15+



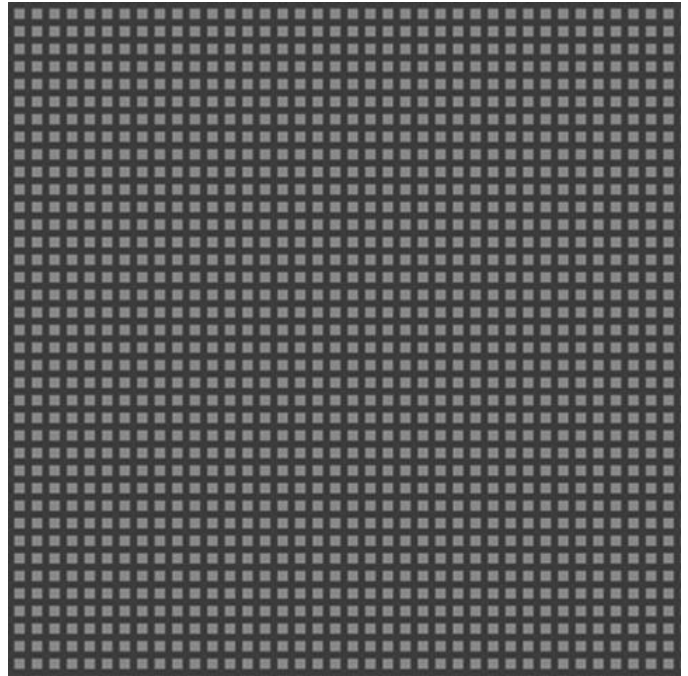
PATTERN : 2619-2

QTY : 15+



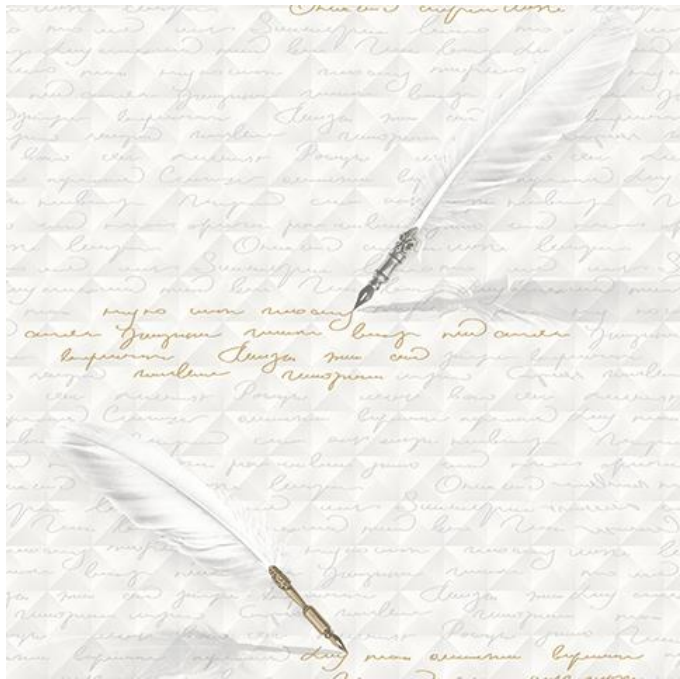
PATTERN : 2619-3

QTY : 10



PATTERN : 2619-4

QTY : 01



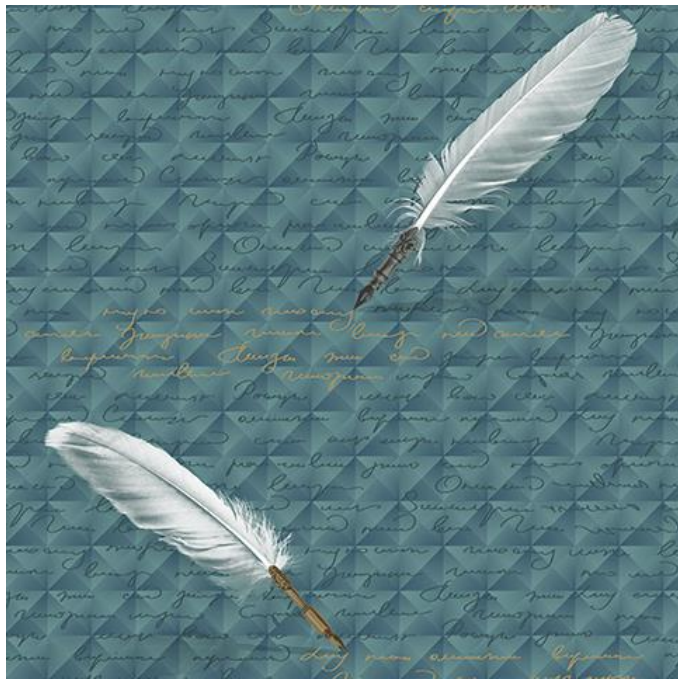
PATTERN : 2620-1

QTY : 01



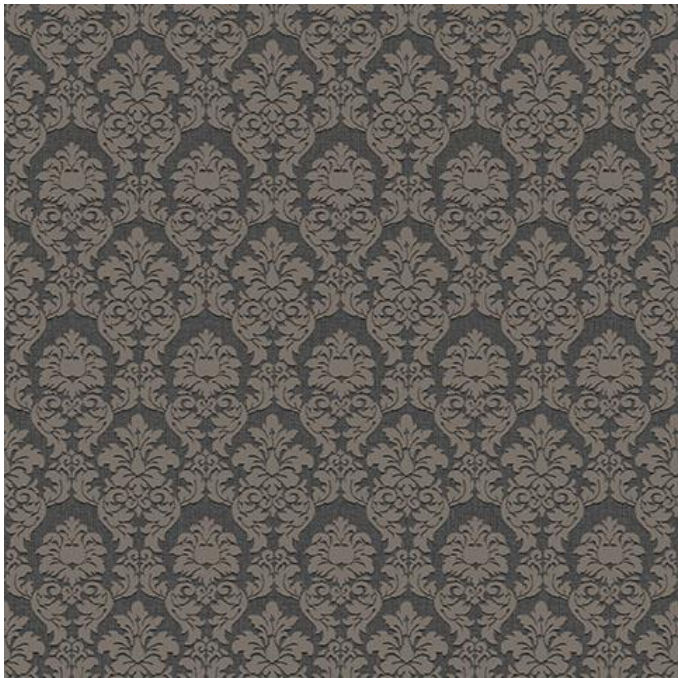
PATTERN : 2620-2

QTY : 02



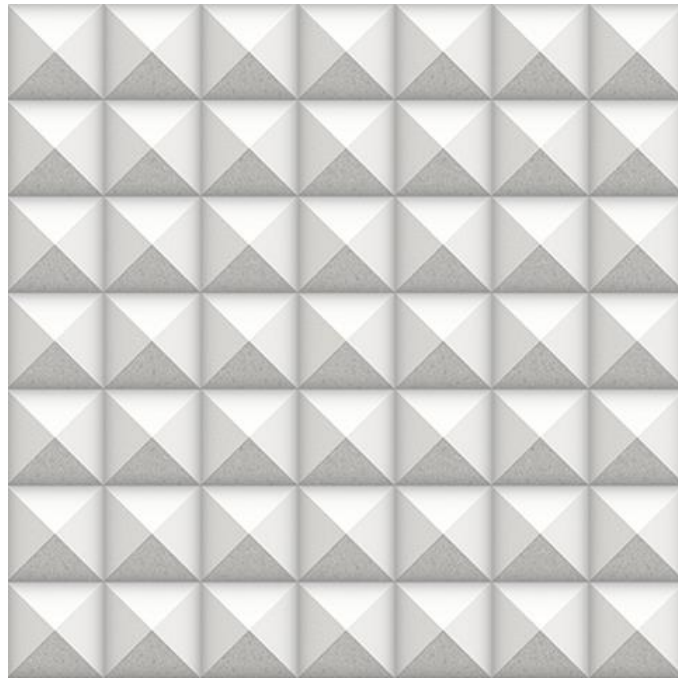
PATTERN : 2620-3

QTY : 01



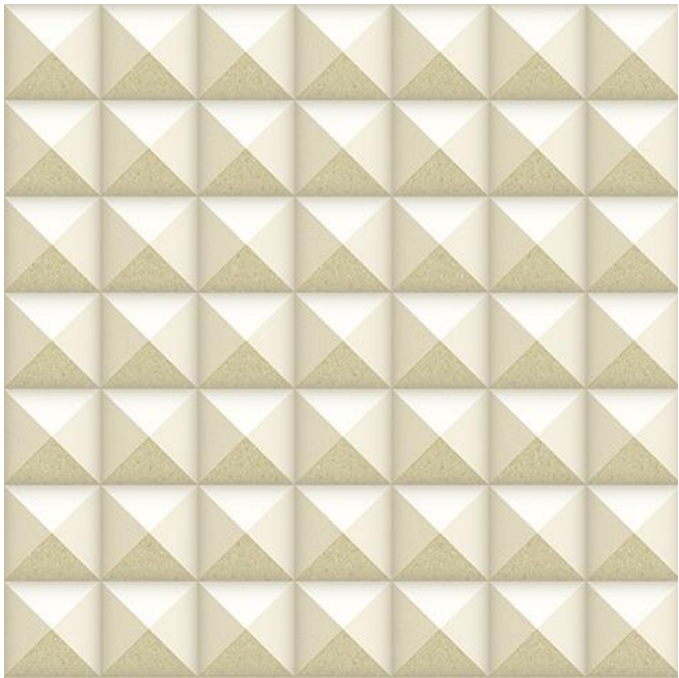
PATTERN : 2621-3

QTY : 12



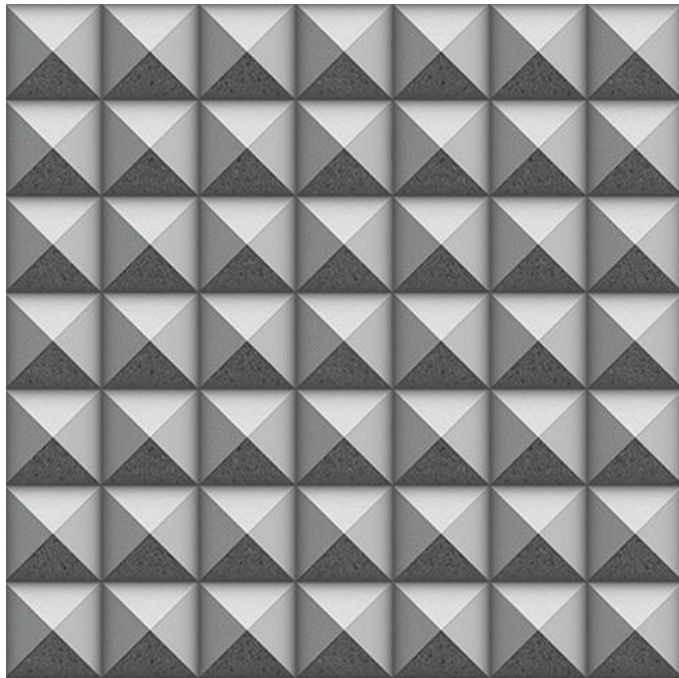
PATTERN : 2622-1

QTY : 15+



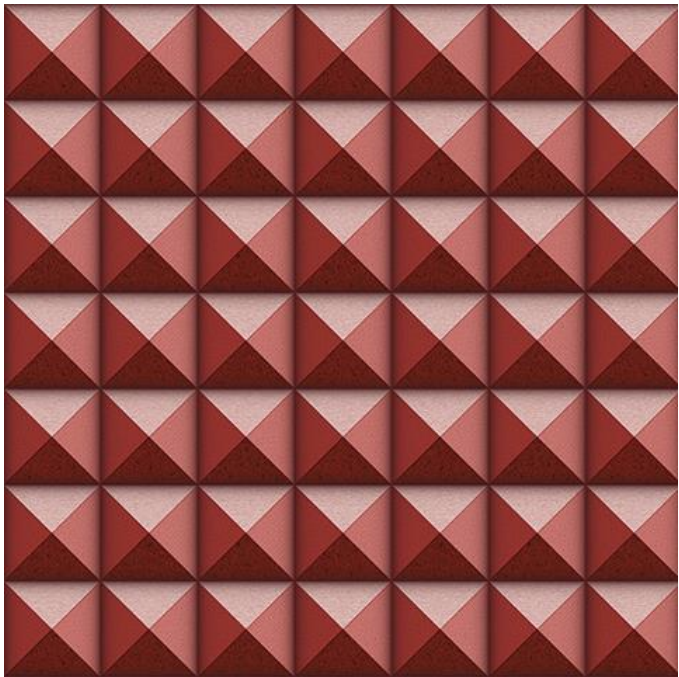
PATTERN : 2622-2

QTY : 06



PATTERN : 2622-3

QTY : 02



PATTERN : 2622-4

QTY : 09



PATTERN : 2623-1

QTY : 15+



PATTERN : 2623-2

QTY : 02



PATTERN : 2624-1

QTY : 08



PATTERN : 2624-3

QTY : 04



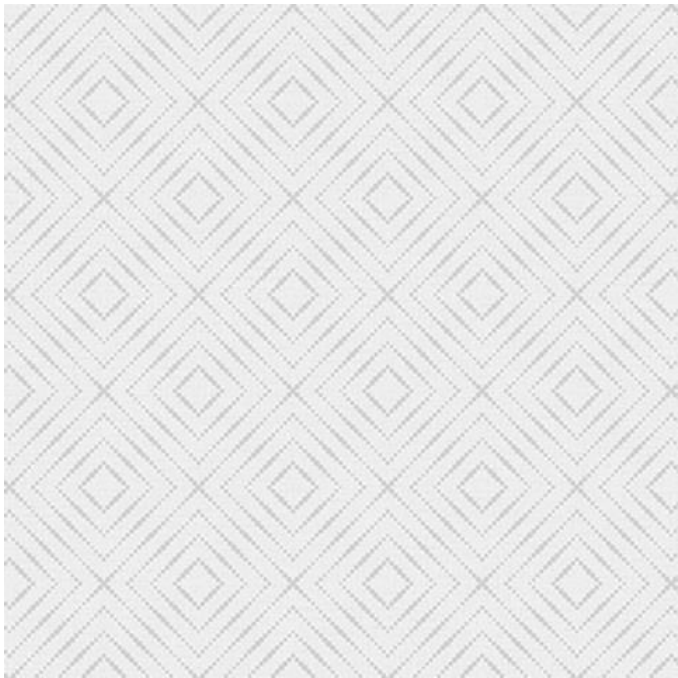
PATTERN : 2624-4

QTY : 03



PATTERN : 2625-1

QTY : 06



PATTERN : 2625-3

QTY : 15+



PATTERN : 2626-2

QTY : 01



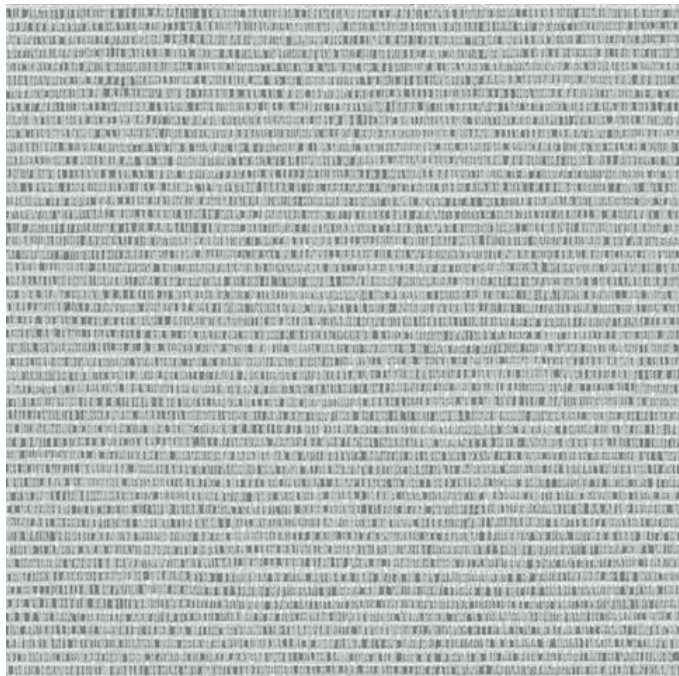
PATTERN : 2627-1

QTY : 15+



PATTERN : 2627-3

QTY : 08



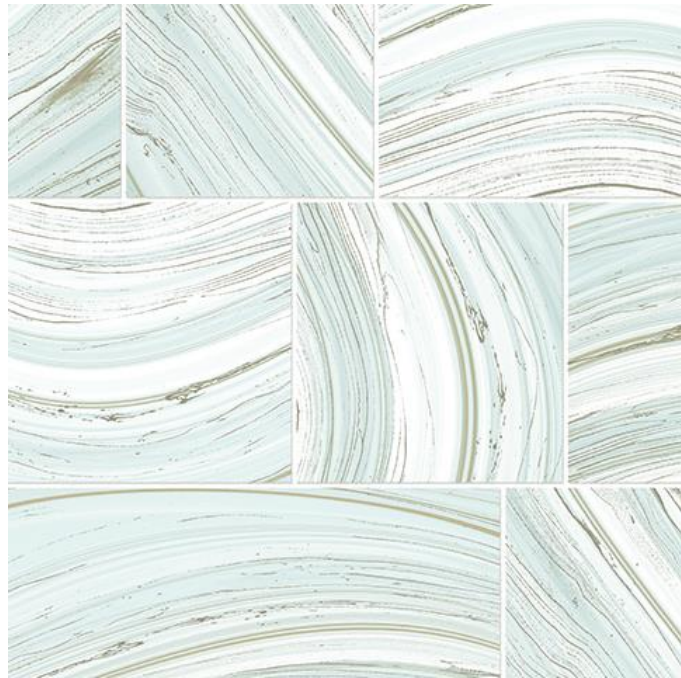
PATTERN : 2627-4

QTY : 15+



PATTERN : 2628-1

QTY : 01



PATTERN : 2628-2

QTY : 15+